

**产品说明 / Product description**

- 无线调光和色温可调 /Wireless dimmable and CCT tunable
- 无需安装控制线和其他控制器 /No need install control wire and other controllers
- 两路输出，共阳极 /Two channels output, common anode
- 输出恒流驱动器 /Output constant current driver
- 符合CE、CCC /Comply with CE、CCC
- 3年质保 /3 years warranty
- 2.4G 无线传输协议/2.4G wireless transmission protocol



**功能 / Functions**

- 通过2.4G无线控制调光和色温调节 /Through 2.4G wireless control dimming and color temperature adjustment
- 场景模式控制/Scene mode control
- 短路保护 /short-circuit protection
- 空载保护 /No-load protection
- 浪涌电压1KV /Surge protection voltage 1KV
- 高PF无频闪 /High PF no strobe

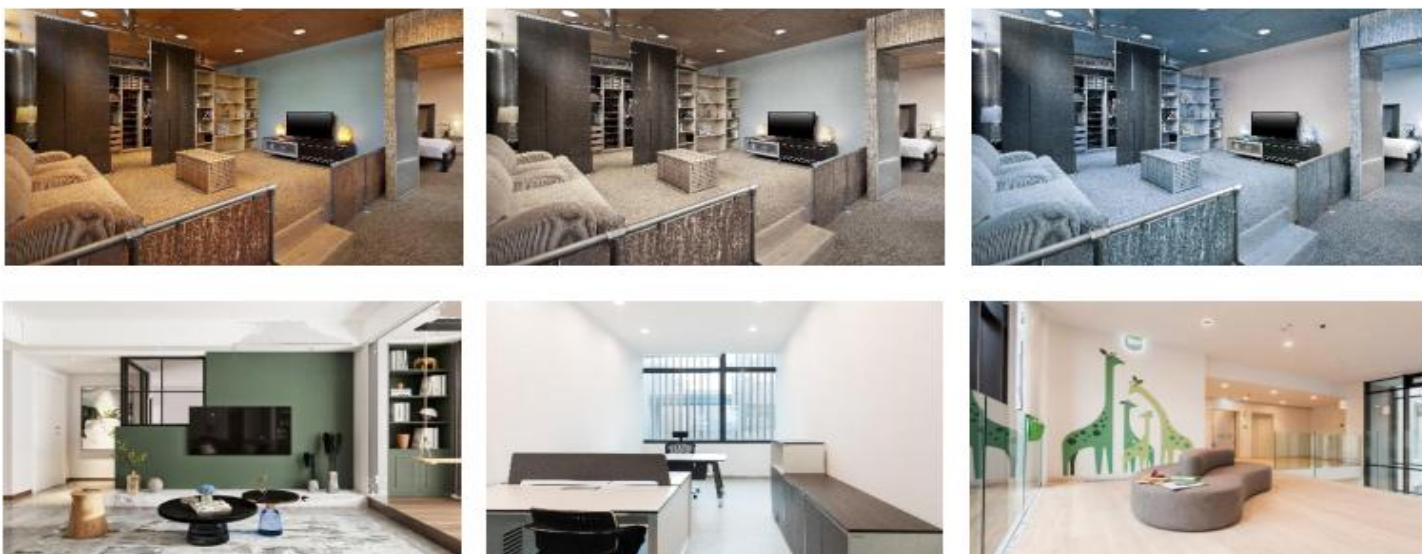
兼容万润多功能遥控器、86控制面板、场景模式控制器和AI语音控制 /Compatible with VANRAIN multifunction remote controllers,86 control panel, scene mode controller and AI voice control

驱动器的功能是由万润的数字控制器实现，有关更多详细信息，请参阅万润数字控制器数据表。

/The functions of driver are realized by Vanrain DIGITAL controllers, please refer to Vanrain DIGITAL controllers datasheet for more details.

**应用 /Application**

适用于家居照明、办公照明、商业照明的调光调色温应用场景



## 技术数据 / Technical Data

### For Driver

型号/Model No.	SEGBxxWxxxZ-B0 ①
额定输入电压/Rated Input Voltage	220-240V
最大输入电流/Max Input Current	0.34A
电源频率/Mains Frequency	50/60Hz
输出电压/Output Voltage	28-40V DC
输出电流范围/Output Current Range	600-1100mA
调光范围/Dimming Range	1%-100%
效率/Efficiency	> 85%
功率因数/Power Factor@full load	> 0.9
寿命/Life Span	20,000Hour
使用温度/Ambient Temperature Ta	-20°C...+40°C
储存温度/Storage Temperature Ts	-20°C...+80°C
尺寸/Dimension	132x45x29mm

① 前面xx表示功率，后面xxx表示输出电流，单位为mA。例如SEGB40W900Z-B0表示功率为40W，输出电流为900mA /The front XX represents power, and the back XXX represents output current, in Ma. For example, SEGB40w900Z-B0 indicates that the power is 40W and the output current is 900mA

### For RF-2.4G

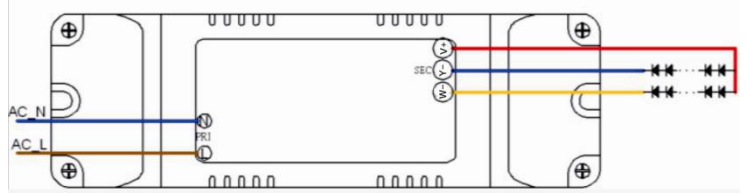
可控距离/Controllable Distance	30Meters without Obstacle
协议/Protocol	2.4G
频率范围/Frequency Range	2402Mhz....2482Mhz
接收灵敏度/Receiving sensitivity	-99dBm@1Mbps
发送功率/Transmission power	+12dBm (Max)
天线类型/Antenna type	External antenna
天线增益/Antenna Gain	0dBi
工作温度/Operating Temperature	-20°C...+85°C

### Standard

LVD	EN61347-2-13
LVD	EN61347-2-13
EMI	EN55015
RED	EN300 440
RED	EN301489-1/ EN301489-3
EMS	IEC6100-3-2/IEC6100-3-3
EMS	IEC6100-4-2/ IEC6100-4-3/ IEC6100-4-4
EMS	IEC6100-4-5/ IEC6100-4-6/IEC6100-4-8

## 安装接线 / Installation and Wiring

### 接线图 / Wiring Diagram

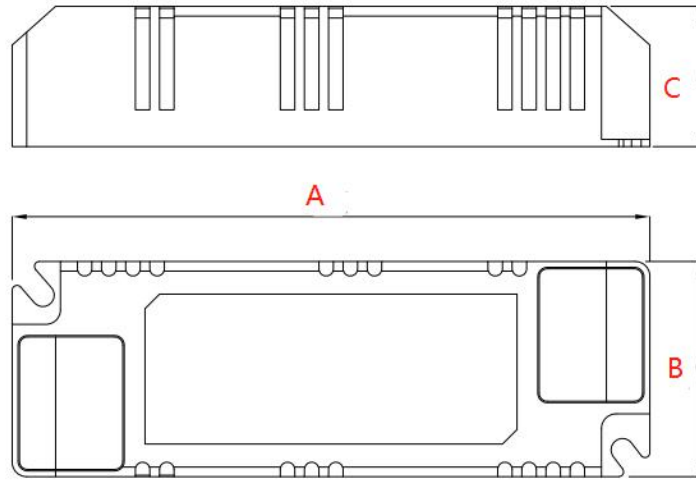


- 双路输出，共阳极，W-用于冷白色LED，Y-用于暖色LED /Two channels output, common anode, W- for cool white LED,Y-for warm LED
- 建议1：所有的连接尽可能短，以确保良好的EMC性能。 Suggestion 1: make all connection as short as possible to ensure good EMC behavior.
- 建议2：使用0.75-1.0mm<sup>2</sup> 电线裸线长度7-8mm /Suggestion 2: use 0.75-1.0mm<sup>2</sup> wire, strip length 7-8mm

### 安装 / Installation

- 安装前需考虑散热/Heat dissipation must be considered before installation.
- 不能安装于全金属包围的环境中，会导致金属屏蔽信号影响数据的接收。 /It can not be installed in the environment surrounded by all metal, which will cause the metal shielding signal to affect the data reception.
- 使驱动器尽可能远离周围环境中的电磁干扰，以确保射频控制行为 /Keep the drivers as far as possible away from electromagnetic interference in the surrounding environment to ensure RF controlling behavior.
- 安装时一定要切断电源 /Make sure to keep mains off while installation.

尺寸/Dimension



A\*B\*C=132\*45\*29 Unit:mm

所有型号和规格 /All models and specifications

SEGB<sub>xxx</sub>W<sub>xxx</sub>Z-B0是该系列的通用型号，包括以下型号：

SEGB<sub>xxx</sub>W<sub>xxx</sub>Z-B0is the general model of the series, including the following models:

Model Number	Input Voltage/V	Max Input Current/mA	Input Power/W	Output Voltage/V	Output Current/mA	PF	Max Output Voltage/V
SEGB25W600Z-B0	220-240AC	175	25	28-40V	600	0.9	45
SEGB27W650Z-B0	220-240AC	190	27	28-40V	650	0.9	45
SEGB30W700Z-B0	220-240AC	210	30	28-40V	700	0.9	45
SEGB32W750Z-B0	220-240AC	225	32	28-40V	750	0.9	45
SEGB35W800Z-B0	220-240AC	245	35	28-40V	800	0.9	45
SEGB37W850Z-B0	220-240AC	260	37	28-40V	850	0.9	45
SEGB40W900Z-B0	220-240AC	280	40	28-40V	900	0.9	45
SEGB42W950Z-B0	220-240AC	295	42	28-40V	950	0.9	45
SEGB43W1000Z-B0	220-240AC	300	43	28-40V	1000	0.9	45
SEGB45W1050Z-B0	220-240AC	315	45	28-40V	1050	0.9	45
SEGB48W1100Z-B0	220-240AC	335	48	28-40V	1100	0.9	45

## 无线数字控制器/Wireless digital controller

无线数字控制器是基于蓝牙无线控制的，与LED驱动器搭配可以进行无线调光、调色温、场景的控制。

The wireless digital controller is based on Bluetooth wireless control. It can be used with LED driver for wireless dimming, color temperature and scene control

## 多功能遥控器/Multifunction Remote Controller

- 单组控制，最多可以连接128个设备 /Single group control, up to 128 devices can be connected
- 无级调光和CCT调节 /Step-less dimming and CCT Adjusting
- 全控：与本遥控器配套的所有灯均可同时控制。

All Control: All the lights that have matched with this remote can be controlled together.

- 控制距离：20M（视环境而定） /Control distance: 20m (depending on the environment)
- 更多功能：场景模式、开/关，调光，调色温/More functions: scene mode, on / off, dimming, color temperature



## 86面板控制器/ 86 Controller

- 单组控制，最多可以连接128个设备 /Single group control, up to 128 devices can be connected
- 适合安装在墙壁上或者桌子上/Suitable to install on the wall or put on the table.
- 无级调光和CCT调节 /Step-less dimming and CCT Adjusting
- All Control: All the lights remote can be controlled

## 场景模式控制器/Scene Mode Controller

- 单组控制，最多可以连接128个设备 /Single group control, up to 265 devices can be connected
- 4种固定场景模式+1种自定义场景/4 fixed scene modes + 1 Custom Scene
- 全控：与本遥控器配套的所有灯均可同时控制。

All Control: All the lights that have matched with this remote can be controlled together.



有关上述控制器的详细信息，请参阅数据表。For more details of above controllers, please refer to the datasheet.

## Note

- 万润保留随时对产品进行更改或修正的权利，恕不另行通知。客户应在下订单前确认数据表是最新的和完整的。VANRAIN reserves the right to make changes or corrections to the products at any time without notice. Customers should verify the datasheets are current and complete before placing order.
- 我们产品的改进是无止境的，我们将永远尽力为客户提供更好的产品。/The improvement of our products is endless, we will be always trying our best to provide better products for our customers.
- 以上内容仅供参考，实际参数以我公司审批单为准 All the contents above are only for reference, The actual parameters are based on the approval sheet of our company.