

**产品说明 / Product description**



- 无线调光和色温可调 /Wireless dimmable and CCT tunable
- 无需安装控制线和其他控制器 /No need install control wire and other controllers
- 两路输出, 共阳极 /Two channels output, common anode
- 输出恒流驱动器 /Output constant current driver
- 宽输出电压范围, 电流可调 /Wide output voltage range and adjustable current
- 3年质保 /3 years warranty
- 涂鸭平台, ZIGBEE 协议/Tuya platform, ZigBee protocol

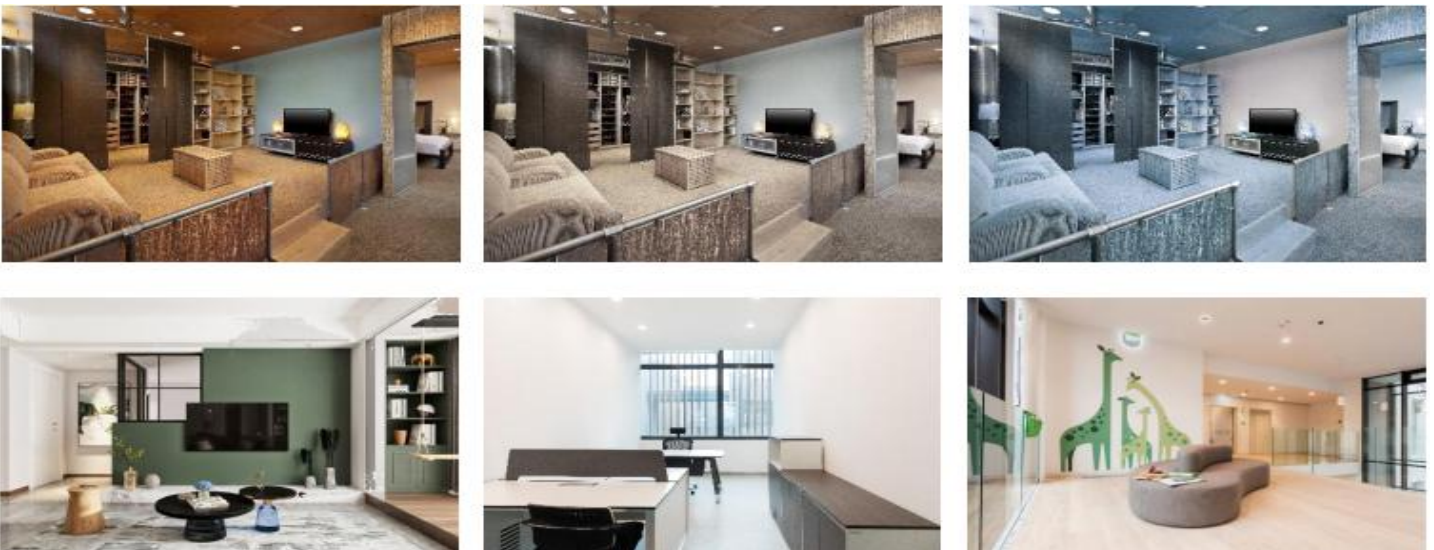
**功能 / Functions**

- 通过ZIGBEE无线控制调光和色温调节 /Through ZigBee wireless control dimming and color temperature adjustment
- 场景模式控制/Scene mode control
- 短路保护 /short-circuit protection
- 空载保护 /No-load protection
- 浪涌电压1KV /Surge protection voltage 1KV
- 低PF无频闪 /low PF no strobe



**应用 / Application**

适用于家居照明、办公照明、商业照明的调光调色温应用场景



## 技术数据 / Technical Data

### For Driver

型号/Model No.	SEZA <sub>xx</sub> W <sub>xxx</sub> Z-A0 ①
额定输入电压/Rated Input Voltage	220-240V
最大输入电流/Max Input Current	0.29A
电源频率/Mains Frequency	50/60Hz
输出电压/Output Voltage	3-42V DC
输出电流范围/Output Current Range	140-600mA
调光范围/Dimming Range	1%-100%
效率/Efficiency	> 80%
功率因数/Power Factor@full load	> 0.5
寿命/Life Span	20,000Hour
使用温度/Ambient Temperature Ta	-20°C...+40°C
储存温度/Storage Temperature Ts	-20°C...+80°C
尺寸/Dimension	111x42x25mm

① 前面xx表示功率，后面xxx表示输出电流，单位为mA。例如SEZA12W300Z-A0表示功率为12W，输出电流为300mA /The front XX represents power, and the back XXX represents output current, in Ma. For example, SEZA12w300Z-A0 indicates that the power is 12W and the output current is 300mA

### For RF- ZIGBEE

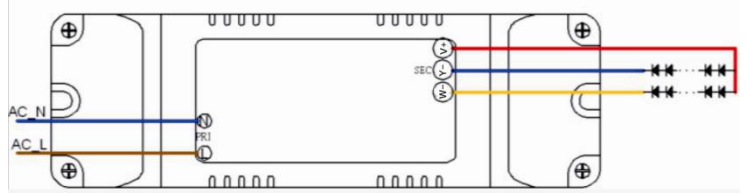
可控距离/Controllable Distance	30Meters without Obstacle
协议/Protocol	zigbee
频率范围/Frequency Range	2405Mhz....2480Mhz
接收灵敏度/Receiving sensitivity	-101dBm@250Kbps
发送功率/Transmission power	+20dBm (Max)
天线类型/Antenna type	PCB internal antenna
天线增益/Antenna Gain	1.0dBi
工作温度/Operating Temperature	-20°C...+85°C

### Standard

LVD	EN61347-2-13
LVD	EN61347-2-13
EMI	EN55015
RED	EN300 440
RED	EN301489-1/ EN301489-3
EMS	IEC6100-3-2/IEC6100-3-3
EMS	IEC6100-4-2/ IEC6100-4-3/ IEC6100-4-4
EMS	IEC6100-4-5/ IEC6100-4-6/IEC6100-4-8

## 安装接线 / Installation and Wiring

### 接线图 / Wiring Diagram

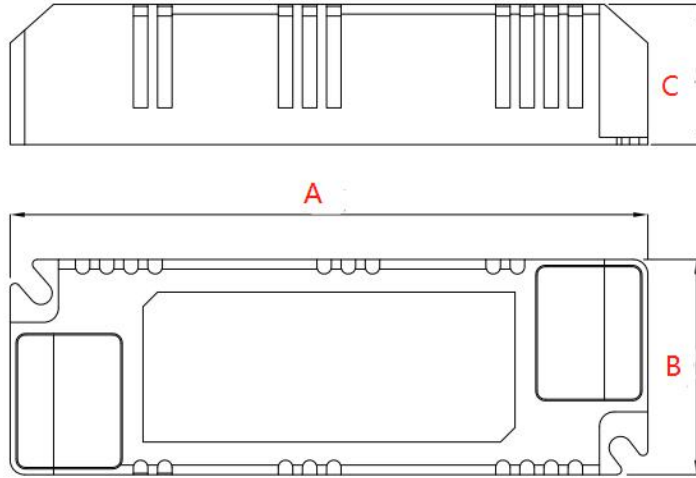


- 双路输出，共阳极，W-用于冷白色LED，Y-用于暖色LED /Two channels output, common anode, W- for cool white LED,Y-for warm LED
- 建议1：所有的连接尽可能短，以确保良好的EMC性能。 Suggestion 1: make all connection as short as possible to ensure good EMC behavior.
- 建议2：使用0.75-1.0mm<sup>2</sup> 电线裸线长度7-8mm /Suggestion 2: use 0.75-1.0mm<sup>2</sup> wire, strip length 7-8mm

### 安装 / Installation

- 安装前需考虑散热/Heat dissipation must be considered before installation.
- 不能安装于全金属包围的环境中，会导致金属屏蔽信号影响数据的接收。 /It can not be installed in the environment surrounded by all metal, which will cause the metal shielding signal to affect the data reception.
- 使驱动器尽可能远离周围环境中的电磁干扰，以确保射频控制行为 /Keep the drivers as far as possible away from electromagnetic interference in the surrounding environment to ensure RF controlling behavior.
- 安装时一定要切断电源 /Make sure to keep mains off while installation.

尺寸/Dimension



A\*B\*C=111\*42\*25 Unit:mm

所有型号和规格 /All models and specifications

SEZA<sub>xx</sub>W<sub>xxx</sub>Z-A0是该系列的通用型号，包括以下型号：

SEZA<sub>xx</sub>W<sub>xxx</sub>Z-A0 is the general model of the series, including the following models:

Model Number	Input Voltage/V	Max Input Current/mA	Input Power/W	Output Voltage/V	Output Current/mA	PF	Max Output Voltage/V
SEZA12W300Z-A0	220-240AC	145	1-12	3-42V	140-290	0.5	50
SEZA24W600Z-A0	220-240AC	290	12-24	3-42V	380-580	0.5	50
Output current selection							
Model Number	PIN 1	PIN 2	PIN 3	PIN 4	Output current (mA)		
SEZA12W300Z-A0	OFF	OFF	OFF	OFF	140		
	ON	OFF	ON	OFF	180		
	OFF	ON	OFF	ON	240		
	ON	ON	ON	ON	290		
SEZA24W600Z-A0	OFF	OFF	OFF	OFF	380		
	ON	OFF	ON	OFF	460		
	OFF	ON	OFF	ON	520		
	ON	ON	ON	ON	580		