

Model: SEWBxxWxxxZ-B0

产品说明 / Product description

- 无线调光和色温可调 /Wireless dimmable and CCT tunable
- 无需安装控制线和其他控制器 /No need install control wire and other controllers
- 两路输出，共阳极 /Two channels output, common anode
- 输出恒流驱动器 /Output constant current driver
- 符合CE、CCC /Comply with CE、CCC
- 3年质保 /3 years warranty
- 涂鸦平台，WIFI协议/Tuya platform, WIFI protocol



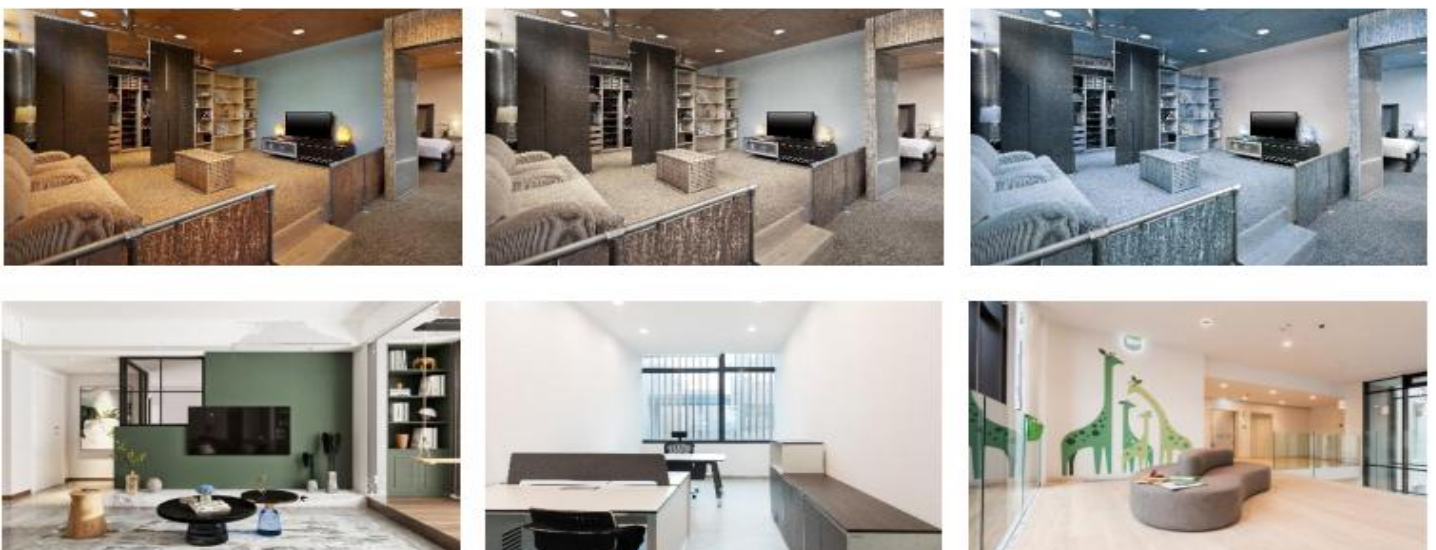
功能 / Functions

- 通过WIFI无线控制调光和色温调节 /Through WIFI wireless control dimming and color temperature adjustment
- 场景模式控制/Scene mode control
- 短路保护 /short-circuit protection
- 空载保护 /No-load protection
- 浪涌电压1KV /Surge protection voltage 1KV
- 高PF无频闪 /High PF no strobe



应用 /Application

适用于家居照明、办公照明、商业照明的调光调色温应用场景



技术数据 / Technical Data

For Driver

型号/Model No.	SEWB _{xx} W _{xxx} Z-B0 ①
额定输入电压/Rated Input Voltage	220-240V
最大输入电流/Max Input Current	0.34A
电源频率/Mains Frequency	50/60Hz
输出电压/Output Voltage	28-40V DC
输出电流范围/Output Current Range	600-1100mA
调光范围/Dimming Range	1%-100%
效率/Efficiency	> 85%
功率因数/Power Factor@full load	> 0.9
寿命/Life Span	20,000Hour
使用温度/Ambient Temperature Ta	-20℃...+40℃
储存温度/Storage Temperature Ts	-20℃...+80℃
尺寸/Dimension	132x45x29mm

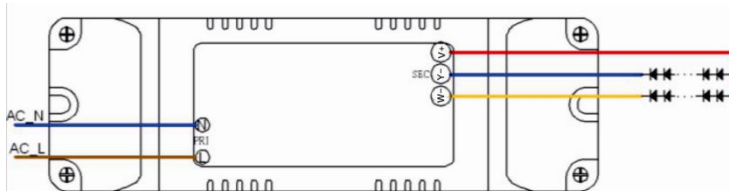
① 前面xx表示功率，后面xxx表示输出电流，单位为mA。例如SEWB40W900Z-B0表示功率为40W，输出电流为900mA /The front XX represents power, and the back XXX represents output current, in Ma. For example, SEWB40w900Z-B0 indicates that the power is 40W and the output current is 900mA

Standard

LVD	EN61347-2-13
LVD	EN61347-2-13
EMI	EN55015
RED	EN300 440
RED	EN301489-1/ EN301489-3
EMS	IEC6100-3-2/IEC6100-3-3
EMS	IEC6100-4-2/ IEC6100-4-3/ IEC6100-4-4
EMS	IEC6100-4-5/ IEC6100-4-6/IEC6100-4-8

安装接线 / Installation and Wiring

接线图 / Wiring Diagram

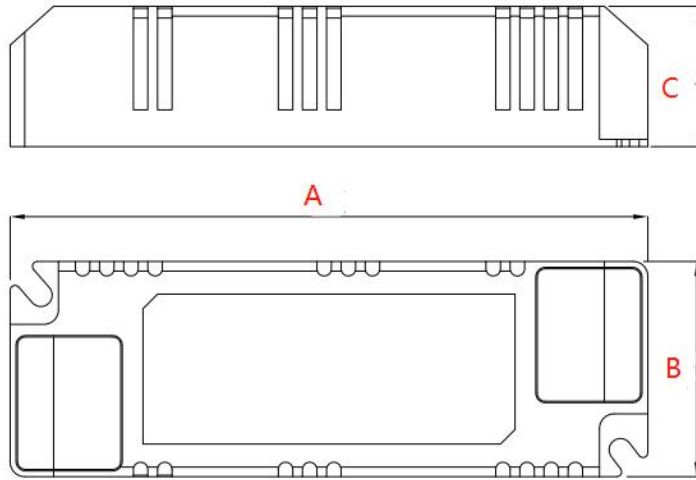


- 双路输出，共阳极，W-用于冷白色LED，Y-用于暖色LED /Two channels output, common anode, W- for cool white LED,Y-for warm LED
- 建议1：所有的连接尽可能短，以确保良好的EMC性能。 Suggestion 1: make all connection as short as possible to ensure good EMC behavior.
- 建议2：使用0.75-1.0mm² 电线裸线长度7-8mm /Suggestion 2: use 0.75-1.0mm² wire, strip length 7-8mm

安装 / Installation

- 安装前需考虑散热/Heat dissipation must be considered before installation.
- 不能安装于全金属包围的环境中，会导致金属屏蔽信号影响数据的接收。 /It can not be installed in the environment surrounded by all metal, which will cause the metal shielding signal to affect the data reception.
- 使驱动器尽可能远离周围环境中的电磁干扰，以确保射频控制行为 /Keep the drivers as far as possible away from electromagnetic interference in the surrounding environment to ensure RF controlling behavior.
- 安装时一定要切断电源 /Make sure to keep mains off while installation.

尺寸/Dimension



A*B*C=132*45*29 Unit:mm

所有型号和规格 /All models and specifications

SEWB_{xxx}W_{xxx}Z-B0是该系列的通用型号，包括以下型号：

SEWB_{xxx}W_{xxx}Z-B0is the general model of the series, including the following models:

Model Number	Input Voltage/V	Max Input Current/mA	Input Power/W	Output Voltage/V	Output Current/mA	PF	Max Output Voltage/V
SEWB25W600Z-B0	220-240AC	175	25	28-40V	600	0.9	45
SEWB27W650Z-B0	220-240AC	190	27	28-40V	650	0.9	45
SEWB30W700Z-B0	220-240AC	210	30	28-40V	700	0.9	45
SEWB32W750Z-B0	220-240AC	225	32	28-40V	750	0.9	45
SEWB35W800Z-B0	220-240AC	245	35	28-40V	800	0.9	45
SEWB37W850Z-B0	220-240AC	260	37	28-40V	850	0.9	45
SEWB40W900Z-B0	220-240AC	280	40	28-40V	900	0.9	45
SEWB42W950Z-B0	220-240AC	295	42	28-40V	950	0.9	45
SEWB43W1000Z-B0	220-240AC	300	43	28-40V	1000	0.9	45
SEWB45W1050Z-B0	220-240AC	315	45	28-40V	1050	0.9	45
SEWB48W1100Z-B0	220-240AC	335	48	28-40V	1100	0.9	45